



SonicWALL TZ Series

NETWORK SECURITY

Uncompromising Security and Performance

- **Uncompromising performance**
- **SonicWALL Reassembly-Free Deep Packet Inspection™**
- **SonicWALL Unified Threat Management (UTM)**
- **SonicWALL Comprehensive Anti-Spam Service**
- **SonicWALL Application Intelligence Service**
- **Modular 3G wireless broadband**
- **Secure 802.11b/g/n wireless LAN (WLAN)**
- **Advanced IPsec and SSL VPN**
- **SonicWALL PortShield port-level security**
- **Automated failover and fallback**
- **Intuitive configuration wizards**
- **Robust Voice and Video over IP (VoIP)**
- **Global Management System**

Network security can not stand still while driving factors like Web 2.0 advancements, expanding bandwidth and emerging threats rapidly evolve and overtake its capabilities. By leveraging SonicWALL's advanced processing technology, the all new TZ Series **dramatically expands comprehensive protection** at a performance level that will not compromise **network throughput**. Each TZ appliance is available as a SonicWALL TotalSecure™ solution, conveniently bundling all hardware and services needed for comprehensive protection.

The all new SonicWALL® TZ Series, including the **TZ 100, TZ 200** and **TZ 210** network security appliances, shatters these limitations by offering the revolutionary, fastest multi-layered network security in its class. Utilizing SonicWALL's industry-leading Unified Threat Management (UTM) and patented Reassembly-Free Deep Packet Inspection™, the TZ Series delivers in-depth protection at unparalleled performance. The new TZ Series appliances dramatically outperform their TZ 180 and 190 predecessors, with the entry level TZ 100 delivering two-and-a-half times the UTM throughput of previous solutions. The TZ Series cost-effectively integrates IPsec and SSL VPN remote access, VoIP, and optional 802.11b/g/n wireless with optional 3G wireless broadband. Designed for the needs of distributed enterprise sites, branch offices, small and medium-sized businesses, retailers and managed service providers, the TZ Series is the first affordable solution that can maximize the highest speeds available from modern ISPs while delivering full UTM protection.

Features and Benefits

Uncompromising performance, applying real-time scanning over state-of-the-art high-speed architecture, delivers up to Gigabit Ethernet speeds.

SonicWALL Reassembly-Free Deep Packet Inspection™ provides enterprise-class protection for key Internet services such as Web, email, file transfers, Microsoft Windows services and messaging.

SonicWALL Unified Threat Management (UTM) delivers real-time gateway protection against the latest viruses, spyware, intrusions, software vulnerabilities and other malicious code.

SonicWALL Comprehensive Anti-Spam Service utilizes real-time sender IP reputation analysis and cloud-based Advanced Content Management techniques to remove spam, phishing and virus-laden messages from inbound SMTP-based emails before they reach your network. This service eliminates the need for less effective, slow responding and error prone real-time black list services.

SonicWALL Application Intelligence Service offers granular application-level access controls to manage bandwidth and prevent leaks of sensitive or proprietary information.

Modular 3G wireless broadband and analog modem support can be used as either a primary or secondary WAN connection for business continuity or rapid deployment in remote locations.

Secure 802.11b/g/n wireless LAN (WLAN) technologies provide secure high-speed wireless connectivity with SonicWALL's wireless security enforcement.

Advanced IPsec and SSL VPN connectivity options provide secure, high-speed office-to-office and individual user remote access.

SonicWALL PortShield port-level security offers flexible protection from traffic on the WAN, DMZ and devices inside your network by easily grouping ports into logical units.

Automated failover and fallback ensures continuous uptime of VPN tunnels by diverting traffic over alternate WAN or WLAN connections in the event of primary connection failure.

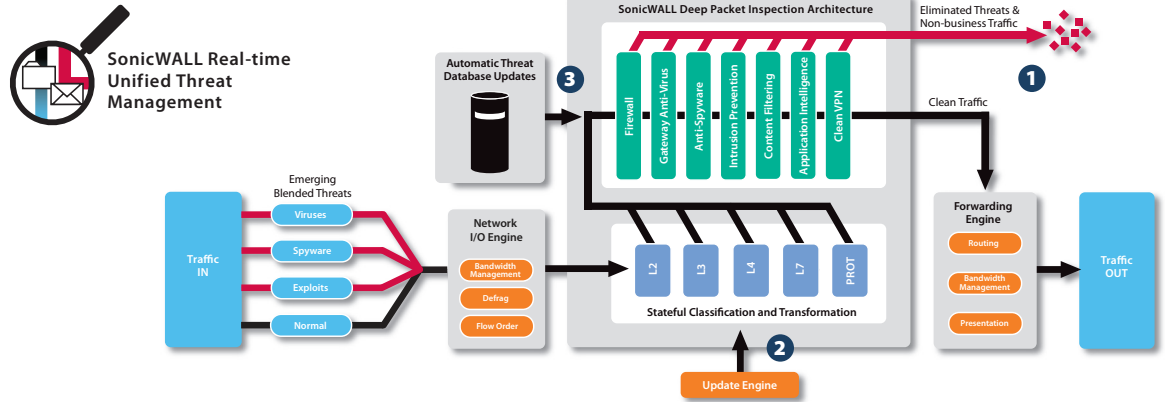
Intuitive configuration wizards simplify even the most complicated tasks, including VPN set-up, NAT configuration and public server configuration.

Robust **Voice and Video over IP (VoIP)** capabilities offer secure, standards-based support for sending voice (audio), streaming video and other media over IP-based networks.

Global Management System (GMS) provides comprehensive global management and reporting tools for simplified configuration, enforcement and management from a central location.

*U.S. Patent 7,310,815—A method and apparatus for data stream analysis and blocking.





Best-in-Class Threat Protection

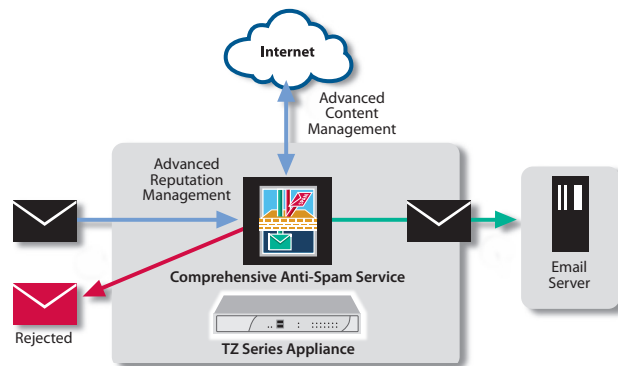
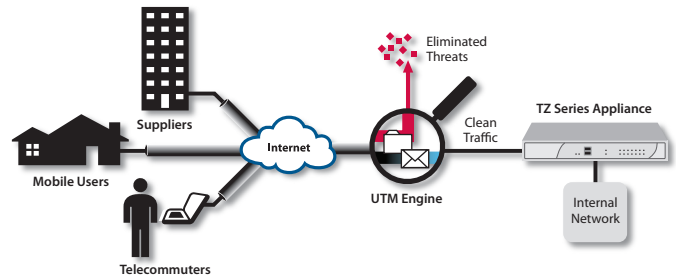
- 1 SonicWALL deep packet inspection protects against network risks such as viruses, worms, Trojans, spyware, phishing attacks, emerging threats and Internet misuse. Application Intelligence Service adds highly-configurable controls to prevent data leakage and manage bandwidth at the application level.
- 2 The SonicWALL Reassembly-Free Deep Packet Inspection™ (RFDPI) engine comprehensively scans entire packets in real-time without stalling traffic

in memory. This functionality allows threats to be identified and eliminated over unlimited file sizes and unrestricted concurrent connections, without interruption.

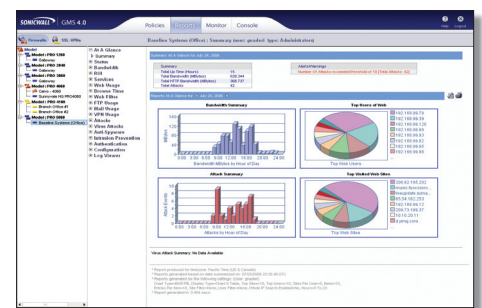
- 3 The TZ Series provides dynamic network protection through continuous, automated security updates, protecting against emerging and evolving threats without requiring any administrator intervention.

SonicWALL Clean VPN™

The TZ Series includes innovative SonicWALL Clean VPN™ technology that protects against vulnerabilities and decontaminates malicious code in traffic from remote users, mobile users and branch offices before it enters the corporate network, all without user intervention. The TZ Series supports both IPSec and SSL VPN termination.



New SonicWALL Comprehensive Anti-Spam Service enables SonicWALL's fully-featured, market-leading protection against spam, phishing, viruses and malware with one simple check box. Using the same technology behind SonicWALL's award-winning Email Security product portfolio, you'll enjoy a 98% effectiveness rate against spam, and reduced bandwidth consumption by eliminating up to 80% of threats at the connection level. With no additional hardware, software or servers to purchase, you'll benefit from an integrated, single point of management, configuration and reporting.



Centralized Policy Management

The TZ Series can be managed using the SonicWALL Global Management System (GMS), which provides flexible, powerful and intuitive tools to manage configurations, view real-time monitoring metrics and integrate policy and compliance reporting, all from a central location.

SonicWALL's

TZ Series is the ultimate security

platform for

distributed

and small

networks,

including remote

and branch

offices and

retail/POS

deployments

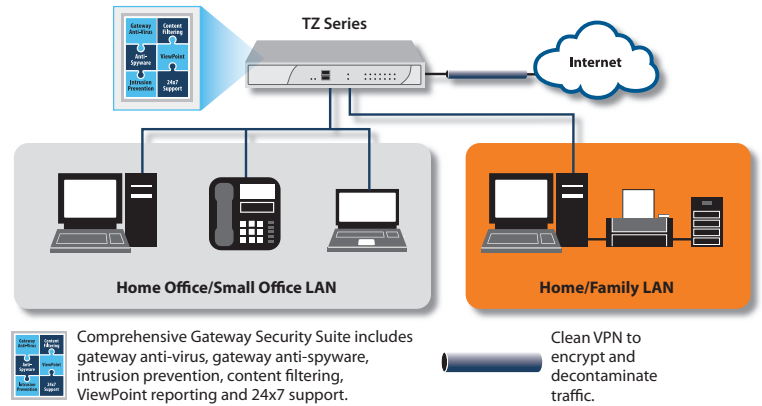
Deployments

Home Office/Small Office

Designed as a complete Unified Threat Management (UTM) platform delivering business-class protection to home office networks, the TZ Series features PortShield technology, which provides secure segmentation of the home network from "work" equipment.

Technologies utilized:

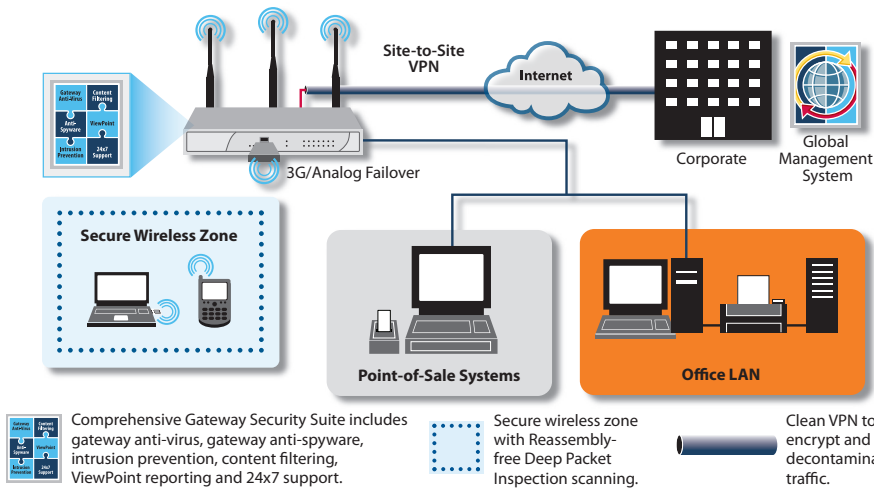
- Unified Threat Management (Gateway Anti-Virus, Anti-Spyware, Intrusion Prevention, Content Filtering, and Enforced Client Anti-Virus)
- PortShield
- SSL VPN and IPSec VPN
- Optional 802.11n Clean Wireless



TZ 100

TZ 200

TZ 210



Small Office/Retail

The TZ Series is a high-performance security platform for small professional offices and retail deployments with mission-critical needs. The TZ 200 and TZ 210 Series feature 3G connectivity through an integrated USB slot for use as either the primary or backup WAN connection.

Technologies utilized:

- Unified Threat Management (Gateway Anti-Virus, Anti-Spyware, Intrusion Prevention, Content Filtering, and Enforced Client Anti-Virus)
- 3G failover
- WAN and VPN failover
- PortShield
- 802.11n Clean Wireless
- Global Management System
- Virtual Access Points (VAPs)

TZ 100

TZ 200

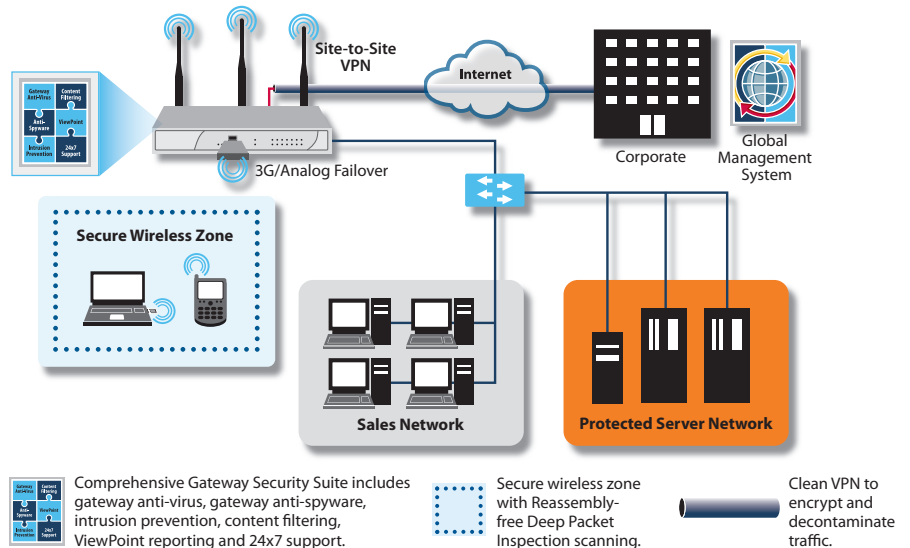
TZ 210

Remote/Branch Office

The TZ 200 and TZ 210 Series are the fastest multi-layered network security solutions in their class, giving remote and branch offices unparalleled Unified Threat Management protection against continually evolving threats. PortShield offers network segmentation, while Application Intelligence Service on the TZ 210 provides application classification and policy management to control applications. Get security and segmentation, along with performance and reliability.

Technologies utilized:

- Unified Threat Management (Gateway Anti-Virus, Anti-Spyware, Intrusion Prevention, Content Filtering, and Enforced Client Anti-Virus)
- Comprehensive Anti-Spam Service
- SSL VPN and IPSec VPN
- 802.11n Clean Wireless
- Optional hardware failover
- Global Management System



TZ 100

TZ 200

TZ 210

Specifications



SonicWALL TZ 100
01-SSC-8734

SonicWALL TZ 100 Wireless-N
01-SSC-8735 (US/Canada)

SonicWALL TZ 100 TotalSecure*
01-SSC-8739

SonicWALL TZ 100 Wireless-N
TotalSecure* 01-SSC-8723
(US/Canada)



SonicWALL TZ 200
01-SSC-8741

SonicWALL TZ 200 Wireless-N
01-SSC-8742 (US/Canada)

SonicWALL TZ 200 TotalSecure*
01-SSC-8746

SonicWALL TZ 200 Wireless-N
TotalSecure* 01-SSC-8715
(US/Canada)



SonicWALL TZ 210
01-SSC-8753

SonicWALL TZ 210 Wireless-N
01-SSC-8754 (US/Canada)

SonicWALL TZ 210 TotalSecure*
01-SSC-8769

SonicWALL TZ 210 Wireless-N
TotalSecure* 01-SSC-8773
(US/Canada)

*Includes one-year of Gateway Anti-Virus, Anti-Spyware, Intrusion Prevention, Application Intelligence (TZ 210 Series) Service, Content Filtering Service, Dynamic Support 24x7 and ViewPoint Reporting.

Certifications



SonicWALL, Inc.

2001 Logic Drive, San Jose, CA 95124
T +1 408.745.9600 F +1 408.745.9300
www.sonicwall.com

	All New TZ Series			
	TZ 180 Series	TZ 100 Series	TZ 200 Series	TZ 210 Series
Firewall				
SonicOS Version	SonicOS Standard	SonicOS Enhanced	SonicOS Enhanced	SonicOS Enhanced
Stateful Throughput¹	90 Mbps	100 Mbps	100 Mbps	200 Mbps
GAV Throughput²	10 Mbps	35 Mbps	50 Mbps	70 Mbps
IPS Throughput²	15 Mbps	50 Mbps	70 Mbps	110 Mbps
UTM Throughput²	10 Mbps	25 Mbps	35 Mbps	50 Mbps
IMIX Throughput²	-	40 Mbps	50 Mbps	110 Mbps
Maximum Connections³	6,000	6,000	12,000	30,000
Maximum UTM Connections	-	6,000	12,000	20,000
New Connections/Sec	250	1,000	1,000	1,500
Nodes Supported	10/25/Unrestricted	-	Unrestricted	-
Denial of Service Attack Protection	-	22 classes of DoS, DDoS and scanning attacks	-	-
SonicPoints Supported	16	1	2	16
VPN				
3DES/AES Throughput⁴	30 Mbps	75 Mbps	75 Mbps	75 Mbps
Site-to-Site VPN Tunnels	2 (10 Node), 10 (25 Node)	5	10	15
Bundled GVC Licenses (Maximum)	0 (10 Node), 1 (25 Node)	-	-	-
Bundled SSL VPN Licenses (Maximum)	5 (10 Node), 25 (25 Node)	0 (5)	2 (10)	2 (25)
Bundled SSL VPN Licenses (Maximum)	-	1 (5)	1 (10)	2 (10)
Encryption/Authentication/DH Group	-	DES, 3DES, AES (128, 142, 256-bit), MD5, SHA-1/DH Group 1, 2, 5, 14	-	-
Virtual Assist Bundled (Maximum)	-	-	1 30-day trial (1)	1 30-day trial (2)
Key Exchange	-	IKE, Manual Key, Certificates (X.509), L2TP over IPsec	-	-
Certificate Support	-	Verisign, Thawte, Cybertrust, RSA Keon, Entrust and Microsoft CA for SonicWALL-to-SonicWALL VPN, SCEP	-	-
VPN Features	-	Dead Peer Detection, DHCP Over VPN, IPsec NAT Traversal, Redundant VPN Gateway, Route-based VPN	-	-
Global VPN Client Platforms Supported	-	Microsoft* Windows 2000, Windows XP, Vista 32/64-bit, Windows 7	-	-
SSL VPN Platforms	-	Microsoft Windows 2000/XP/Vista 32/64-bit / Windows 7, Mac OS X 10.4+, Linux FC3+/ Ubuntu 7+/ OpenSUSE	-	-
Security Services				
Deep Packet Inspection Services	-	Gateway Anti-Virus, Anti-Spyware and Intrusion Prevention	-	-
Content Filtering Service (CFS)	-	HTTP URL, HTTPS IP, keyword and content scanning, ActiveX, Java Applet, and cookie blocking	-	-
Enforced Client Anti-Virus and Anti-Spyware	-	HTTP/S, SMTP, POP3, IMAP and FTP, Enforced McAfee™ Client Email attachment blocking	-	-
Comprehensive Anti-Spam Service	-	Supported	Supported	Supported
Application Intelligence	-	-	-	Supported
Networking				
IP Address Assignment	-	Static, (DHCP, PPPoE, L2TP and PPTP client), Internal DHCP server, DHCP relay	-	-
NAT Modes	1:1, 1:many, many:many, transparent mode	1:1, 1:many, many:1, many:many, flexible NAT (overlapping IPs), PAT, transparent mode	-	-
VLANs	PortShield*	-	PortShield	-
DHCP	-	Internal server, relay	-	-
Routing	-	RIPv1/v2 advertisement, static routes	OSPF, RIP v1/v2, static routes, policy-based routing, multicast	-
Authentication	-	XAUTH/RADIUS, Active Directory, SSO, LDAP, Novell, internal user database	-	-
User Database	100/150* users	25 users	100 users	150 users
VoIP	-	Full H.323v1-5, SIP, gatekeeper support, outbound bandwidth management, VoIP over WLAN, deep inspection security, full interoperability with most VoIP gateway and communications devices	-	-
System				
Zone Security	Yes*	Yes	Yes	Yes
Schedules	Yes	Yes	Yes	Yes
Object-based/Group-based Management	Yes*	Yes	Yes	Yes
DDNS	-	Dynamic DNS providers include: dyndns.org, yi.org, no-ip.com and changeip.com	-	-
Management and Monitoring	-	Local CLI, Web GUI (HTTP, HTTPS), SNMP v2; Global management with SonicWALL GMS	-	-
Logging and Reporting	-	ViewPoint, Local Log and Syslog	-	-
Hardware Failover	-	-	Active/Passive	Active/Passive
Anti-Spam	-	RBL support, Allowed/Blocked Lists, Optional SonicWALL Anti-Spam Desktop available*	-	-
Load Balancing	-	Yes, Outgoing and Incoming*	-	-
Standards	-	TCP/IP, UDP, ICMP, HTTP, HTTPS, IPsec, ISAKMP/IKE, SNMP, DHCP, PPPoE, L2TP, PPTP, RADIUS, IEEE 802.3	-	-
Built-in Wireless LAN				
Standards	802.11b/g (WEP, WPA, WPA2, 802.11i, TKIP, PSK, 02.1x, EAP-PEAP, EAP-TTLS)	802.11b/g/n (WEP, WPA, WPA2, 802.11i, TKIP, PSK, 02.1x, EAP-PEAP, EAP-TTLS)	-	-
Virtual Access Points (VAPs)⁵	-	-	Up to 8 for all appliances	-
Antennas (5 dBi Diversity)	-	Dual, detachable, external	-	Triple, detachable, external
Radio Power				
802.11b	13 dBm maximum	-	18 dBm maximum	-
802.11g	20 dBm maximum @ 6-48 Mbps, 19dBm @ 54 Mbps	-	18 dBm @ 6-48 Mbps, 14 dBm @ 54 Mbps	-
802.11n	-	-	19 dBm MCS 0, 12 dBm MCS 15	-
Radio Receive Sensitivity				
802.11b	-89 dBm @ 11 Mbps	-	-90 dBm @ 11Mbps	-
802.11g	-91 dBm @ 6 Mbps, 73 dBm @ 54 Mbps	-	-91 dBm @ 6Mbps, -74 dBm @ 54 Mbps	-
802.11n	-	-	-89 dBm MCS 0, -70 dBm MCS 15	-
Hardware				
Interfaces	(7) 10/100	(5) 10/100	(5) 10/100	(2) 10/100/1000, (5) 10/100
Flash Memory/RAM	16 MB/128 MB	16 MB/128 MB	16 MB/256 MB	32 MB/256 MB
3G Wireless/Modem**	-	-	-	With USB 3G Adapter/Modem
USB Ports	-	-	1	2
Power Input	-	100 to 240 VAC, 50-60 Hz, 1 A	-	-
Max Power Consumption	7.7 W/10.0 W (TZ 180 W)	7.5 W/9.5 W (TZ 100 W)	8.6 W/10.6 W (TZ 200 W)	9.4 W/11.7 W (TZ 210 W)
Total Heat Dissipation	26 BTU/34 BTU (TZ 180 W)	26 BTU/33 BTU (TZ 100 W)	30 BTU/37 BTU (TZ 200 W)	32 BTU/40 BTU (TZ 210 W)
Certifications	ICSA Firewall 4.1, Common Criteria EAL4+, FIPS 140-2 Level 2, VPNC AES*	-	VPNC AES	-
Certifications (Pending)	-	-	ICSA Firewall 4.1, FIPS 140-2, Common Criteria EAL 4+	-
Form Factor and Dimensions	8.3 x 4.9 x 1.1 in (21.1 x 12.4 x 2.8 cm)	6.30 x 5.63 x 1.46 in (16 x 14.3 x 3.7 cm)	6.30 x 5.63 x 1.46 in (16 x 14.3 x 3.7 cm)	8.9 x 5.9 x 1.9 in (22.5 x 14.9 x 3.6 cm)
Weight	1.6 lbs/0.73 kg, 1.9 lbs/0.86 kg (TZ 180 W)	2.0 lbs/0.91 kg, 2.5 lbs/1.1 kg (TZ 100 W)	2.0 lbs/0.91 kg, 2.5 lbs/1.1 kg (TZ 200 W)	2.0 lbs/0.91 kg, 2.8 lbs/1.3 kg (TZ 210 W)
Major Regulatory Compliance	-	FCC Class B, ICES Class B, CE, CE-Tick, VCCI Class B, MIC, NOM, UL, cUL, TUV/GS, CB, WEEE, RoHS	-	-
Environment/Humidity	-	32-105°F, 0-40°C / 5-95% non-condensing	-	-
MTBF	8.5 Years	-	8 Years Minimum	-

¹ Testing Methodologies: Maximum performance based on RFC 2544 (for firewall). Actual performance may vary depending on network conditions and activated services. ² UTM/Gateway AV/Anti-Spyware/IPS throughput measured using industry standard Spirent WebAvalanche HTTP performance test and Ixia test tools. Testing done with multiple flows through multiple port pairs. ³ Actual maximum connection counts are lower when UTM services are enabled. ⁴ VPN throughput measured using UDP traffic at 1280 byte packet size adhering to RFC 2544. ⁵ Supported on the Internal Radio for the TZ 100 W, TZ 200 W and TZ 210 W only. ^{**} With SonicOS Enhanced. ^{***} 3G card and modem are not included. See <http://www.sonicwall.com/us/products/cardsupport.html> for supported USB devices.

SonicWALL's line-up of comprehensive protection

